

C A T A L O G U E

BENSON WATCHWINDERS

S W I S S S E R I E S

OUR STORY

We are proud to present you our Benson Swiss Series watch winders. This new and innovative line of watch winders offers Swiss technology, perfect functionality and luxury styling. We worked for 2 years to perfect the design and technology. Now the Benson Swiss Series watch winders are here.

Benson Watchwinders was founded in 2010 in The Netherlands. With attention to detail, quality and fine materials our brand quickly made a name for itself. All watch winders are designed, developed and tested in the Netherlands by skilled craftsmen.

Quality and durability are of great importance. That is why the Benson Swiss Series watch winders meet the highest standards. To prove this, every Benson Swiss Series watch winder comes with a 3-year international warranty.

Leon op de Weegh,
CEO of Benson Watchwinders



INDEX



SWISS SERIES 1

PAGE 8-9



SWISS SERIES 3

PAGE 12-13



SWISS SERIES 2

PAGE 10-11



SWISS SERIES 4

PAGE 14-15



Swiss technology

The Benson Swiss Series watch winders are intended to provide your automatic watches with energy in a safe and professional manner. Therefore our Swiss Series watch winders use a Swiss made motor and gearbox. This ensures the best quality, durability and functionality.

SWISS SERIES

WITH THIS COLLECTION OF HIGH END WATCH WINDERS WE DISTINGUISH OURSELVES IN TERMS OF QUALITY, APPEARANCE AND FUNCTIONALITY. WITH A MODERN DESIGN AND INNOVATIVE TECHNOLOGY, WE ACCENTUATE THE EXCLUSIVE CHARACTER OF THESE MASTERPIECES.



EASILY ADAPTABLE CONTROL PANEL



BUILT-IN LED LIGHT



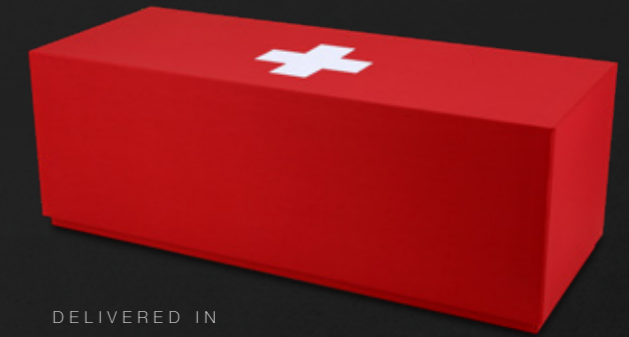
SWISS MADE MOTORS



SPECIAL VELVET TO PROTECT YOUR WATCHES

LUXURY WATCH HOLDER FOR ANY WRIST SIZE

GLASS FRONT TO PROTECT YOUR WATCHES



DELIVERED IN LUXURIOUS SPECIAL BOX




INCLUDING AN OFFICIAL CERTIFICATE AND USER GUIDE



INCLUDING ADAPTER FOR US, UK OR EU

 SWISS MADE TECHNOLOGY

 ASSEMBLED IN THE NETHERLANDS



SWISS SERIES 1

single winders



SWISS SERIES 1

FUNCTIONS

CAPACITY: 1 WATCH
ROTATION: CLOCKWISE, COUNTER-CLOCKWISE
AND BI-DIRECTIONAL
TPD: 650, 850 AND 1800
9 PRE-SET ROTATION PROGRAMS
FLEXIBLE WATCH HOLDER
LED LIGHTING

TECHNIQUE

ASSEMBLED IN THE NETHERLANDS
SWISS MADE MOTOR AND GEARBOX
LCD CONTROL PANEL
DIMENSIONS: 13,5 X 15,5 X 14,5 CM (L X W X H)

POWER SUPPLY

ADAPTER OR BATTERIES

MATERIALS

WOOD, 12 LAYERS OF PAINT
WITH A LACQUER FINISH
GENUINE PADDED LEATHER
GLASS DOOR
SPECIAL SOFT VELVET TO
PROTECT THE WATCHES

LEATHER



1.20 BLACK LEATHER



1.20 LIGHT BROWN LEATHER



1.20 DARK BROWN LEATHER

WOOD



1.20 BLACK



1.20 MACASSAR



1.20 WALNUT



1.20 CARBON FIBRE

LEATHER LIMITED EDITION



1.20 RED LEATHER



1.20 BLUE LEATHER



1.20 WHITE LEATHER



1.20 GREEN LEATHER



SWISS SERIES 2

double winders



SWISS SERIES 2

FUNCTIONS

CAPACITY: 2 WATCHES
ROTATION: CLOCKWISE, COUNTER-CLOCKWISE
AND BI-DIRECTIONAL
TPD: 650, 850 AND 1800
9 PRE-SET ROTATION PROGRAMS
FLEXIBLE WATCH HOLDER
LED LIGHTING

TECHNIQUE

ASSEMBLED IN THE NETHERLANDS
SWISS MADE MOTOR AND GEARBOX
LCD CONTROL PANEL
DIMENSIONS: 24 X 15,5 X 14,5 CM (L X W X H)

POWER SUPPLY

ADAPTER OR BATTERIES

MATERIALS

WOOD, 12 LAYERS OF PAINT
WITH A LACQUER FINISH
GENUINE PADDED LEATHER
GLASS DOOR
SPECIAL SOFT VELVET TO
PROTECT THE WATCHES

LEATHER



2.20 BLACK LEATHER



2.20 LIGHT BROWN LEATHER



2.20 DARK BROWN LEATHER

WOOD



2.20 BLACK



2.20 MACASSAR



2.20 WALNUT



2.20 CARBON FIBRE

LEATHER LIMITED EDITION



2.20 RED LEATHER



2.20 BLUE LEATHER



2.20 WHITE LEATHER



2.20 GREEN LEATHER



SWISS SERIES 3

triple winders

SWISS SERIES 3

FUNCTIONS

CAPACITY: 3 WATCHES
ROTATION: CLOCKWISE, COUNTER-CLOCKWISE
AND BI-DIRECTIONAL
TPD: 650, 850 AND 1800
9 PRE-SET ROTATION PROGRAMS
FLEXIBLE WATCH HOLDER
LED LIGHTING

TECHNIQUE

ASSEMBLED IN THE NETHERLANDS
SWISS MADE MOTOR AND GEARBOX
LCD CONTROL PANEL
DIMENSIONS: 34 X 15,5 X 14,5 CM (L X W X H)

POWER SUPPLY

ADAPTER

MATERIALS

WOOD, 12 LAYERS OF PAINT
WITH A LACQUER FINISH
GENUINE PADDED LEATHER
GLASS DOOR
SPECIAL SOFT VELVET TO
PROTECT THE WATCHES

LEATHER

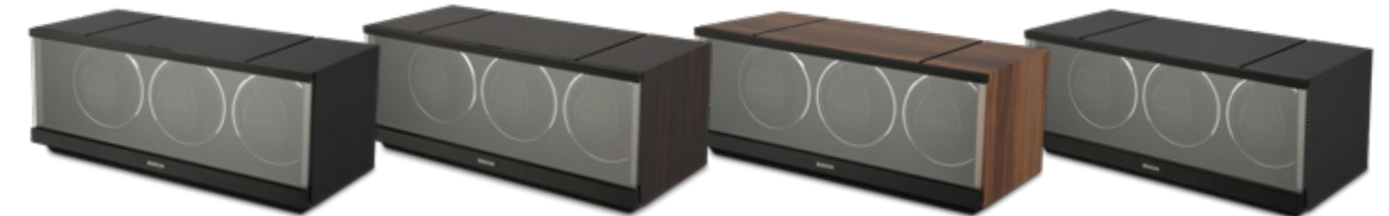


3.20 BLACK LEATHER

3.20 LIGHT BROWN LEATHER

3.20 DARK BROWN LEATHER

WOOD



3.20 BLACK

3.20 MACASSAR

3.20 WALNUT

3.20 CARBON FIBRE

LEATHER LIMITED EDITION



3.20 RED LEATHER

3.20 BLUE LEATHER

3.20 WHITE LEATHER

3.20 GREEN LEATHER





SWISS SERIES 4

quad winders



SWISS SERIES 4

FUNCTIONS

CAPACITY: 4 WATCHES
ROTATION: CLOCKWISE, COUNTER-CLOCKWISE AND BI-DIRECTIONAL
TPD: 650, 850 AND 1800
9 PRE-SET ROTATION PROGRAMS
FLEXIBLE WATCH HOLDER
LED LIGHTING

TECHNIQUE

ASSEMBLED IN THE NETHERLANDS
SWISS MADE MOTOR AND GEARBOX
LCD CONTROL PANEL
DIMENSIONS: 45 X 15,5 X 14,5 CM (L X W X H)

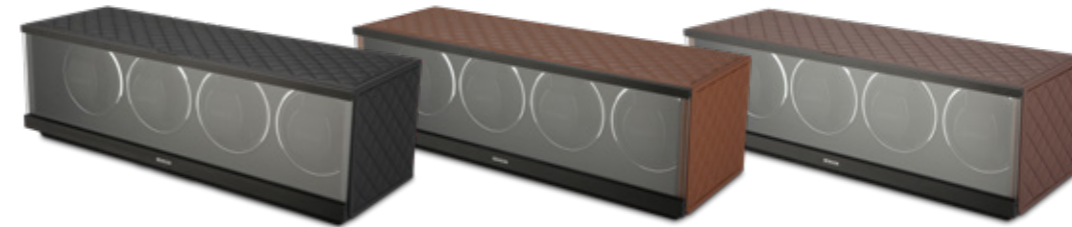
POWER SUPPLY

ADAPTER

MATERIALS

WOOD, 12 LAYERS OF PAINT WITH A LACQUER FINISH
GENUINE PADDED LEATHER
GLASS DOOR
SPECIAL SOFT VELVET TO PROTECT THE WATCHES

LEATHER



4.20 BLACK LEATHER

4.20 LIGHT BROWN LEATHER

4.20 DARK BROWN LEATHER

WOOD



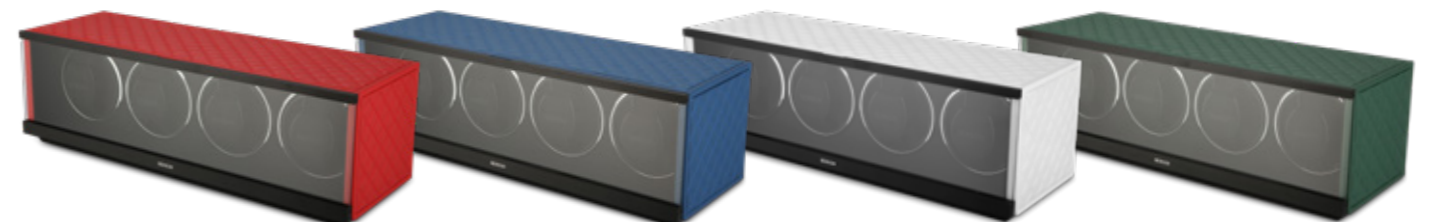
4.20 BLACK

4.20 MACASSAR

4.20 WALNUT

4.20 CARBON FIBRE

LEATHER LIMITED EDITION



4.20 RED LEATHER

4.20 BLUE LEATHER

4.20 WHITE LEATHER

4.20 GREEN LEATHER

Swiss Series

In a world that is constantly moving,
motion is essential for the development of mankind.

There will be no motion without time,
and no time without motion.

Using motion in our watch winders to keep time,
gives the ability to create history today.

BENSON WATCHWINDERS

S W I S S S E R I E S

WWW.BENSON-WATCHWINDERS.COM